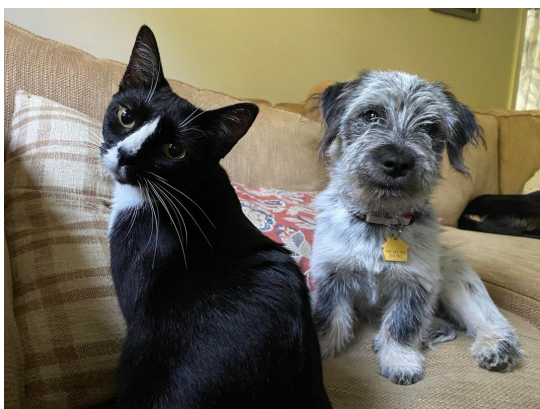


Live and Let Live Farm Rescue
20 Paradise Lane
Chichester, NH 03258
603-798-5615
www.liveandletlivefarm.org
Addressee or current resident

Addressee or current resident

Non Profit Org.
US Postage
P A I D
Concord, NH
Permit #972



Seniors in Need

Live and Let Live Farm Rescue helps animals regardless of age. Recently, two seniors came to us looking for a second chance to live out their golden years. Penny (right), an 8-year-old spayed, female Dachshund, was surrendered when her owner was forced to move and could not take her.

She was scared when she first arrived at the rescue because she had lived with her owner since she was a puppy. Our volunteers gave Penny lots of attention, and she began adjusting to this change in her life. She has since been adopted into a forever home.



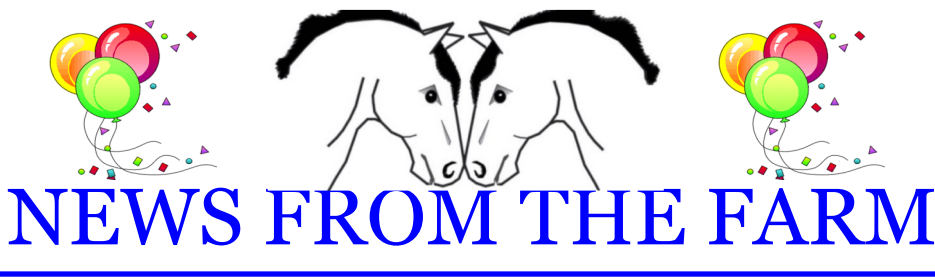
Sugar (left), a 13-year-old spayed, female Yorkshire Terrier, came to the rescue when her owner passed away. No one in the family could give her a home; and as a result, they took her to a veterinarian to be euthanized.

However, the veterinarian said that Sugar is healthy and has a lot more living to do, and recommended surrendering her to Live and Let Live Farm Rescue.



We are happy to report that she, too, has been adopted into a loving, forever home.

25th Anniversary
1997 - 2022



A Busy Anniversary Year

2022 is Live and Let Live Farm Rescue's 25th anniversary of saving and rehabilitating animals, and it has been extremely busy with surrenders and transports.



We have been inundated with requests to rescue all kinds of animals, especially dogs, cats, rabbits, guinea pigs, goats, horses, and birds, from owners who can no longer care for them. Some owners have become ill or passed away while others have suffered economic reversals and lost their homes.

The economic downturn perpetuated by rampant inflation has resulted in fewer donations nationwide. Adoptions are also down increasing an animal's shelter stay. We continue to receive many pregnant dogs and cats, orphaned pups and kittens, and as many transports as possible to save these animals from being euthanized in other parts of the country where spaying and neutering are not a priority.

Our plans for expansion are on hold due to limited funds, continuing supply chain issues, and a shortage of volunteers. We are focused on day-to-day operations to feed and provide medical attention for animals in our care and to rescue those in dire situations. Your donations enable us to help more animals in need as we can all make a difference in an animal's life.

The pandemic hit us hard and we are still experiencing some of its effects. Nevertheless, we are slowly returning to our routine. Our weekly, Sunday guided tour at 2:30 has resumed. Adoptions are held on Sundays from 2 to 4 pm and by appointment.

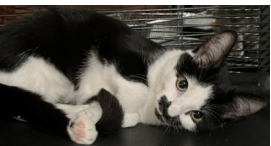
The future may be unclear, but we are determined to overcome whatever obstacles we encounter in order to continue helping animals in their greatest time of need.

We are grateful to everyone who has supported us through these amazing 25 years of saving and rehabilitating lives.

Animals

"Cats have it all – admiration, an endless sleep, and company only when they want it." – Rod McKuen.

"Dogs are our link to paradise. They don't know evil or jealousy or discontent." –Milan Kundera



CHICHESTER, NH

Live and Let Live Farm

New Arrivals Photo Gallery



Urgent: Help Needed

Live and Let Live Farm Rescue needs help for buildings and grounds maintenance, as well as vehicle upkeep and snowplowing.

Interested individuals, please send an email to info@liveandletfarm.org. Put "farm maintenance" in the subject line.

Happy Birthday, Joey

Joey was born with congenital megaesophagus, a disorder in which the esophagus is enlarged and lacks the ability to transport food and water to the stomach. Consequently, his body could not get the nutrients that it needs for him to grow and develop normally, and he was not expected to live longer than a year.

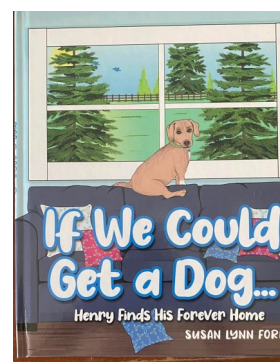


His adoptive family had a highchair built for him so that he can eat and drink in a vertical position thereby allowing food and water to travel into his stomach using gravity.

He is now living his best life and recently celebrated his fifth birthday.

If We Could Get A Dog... Henry Finds His Forever Home

Susan Lynn Ford, the author, has been an animal lover all her life. She has two rescue cats and three rescue dogs, including Henry, whom she adopted from Live and Let Live Farm Rescue.



The story focuses on Emily, a young girl, who has asked for a dog for a long time. Her parents want her to understand that adopting a dog is a long-term commitment. She must be prepared to feed and walk the dog, as well as to be patient with him while he adjusts to his new home.

The book is recommended for young children who love animals. It is easy to read with many illustrations and is available on Amazon and other bookstores throughout the area.

Special Thanks

Thank you to the sponsors of our 2023 calendar:

F.L. Merrill Construction, Inc.
<https://flmerrill.com>
603-228-5558

FUNds4Paws
<https://funds4paws.org>

Chichester Country Store
<https://www.chichestercountrystore.com>
603-798-5081

Homes of New Hampshire Realty
<https://homesofnhrealty.com>
603-437-4447

Wells Fargo Advisors
Norman Barrett, Managing Director—Investments
<https://www.wellsfargoadvisors.com>
508-862-4346

The Circle Restaurant
<https://www.facebook.com/TheCircleRestaurant>
603-736-8169

Dumpster Depot
<https://www.dumpsterdepot.com>
1-866-56-DEPOT

Edward Jones
Stanley Greene, Financial Advisor
<https://www.edwardjones.com>
603-769-3037

Capitol Craftsman Romance Jewelers
<https://capitolcraftsman.com>
603-224-6166

Granite State Automation
<https://www.granitestateautomation.com>
603-836-5520/5521

Edwards CPA Group, P.C.
<https://edwardscpagroup.com>
603-286-8000

FUNSPOT
<https://funspotnh.com>
603-366-4377



What You Can Do Today

- Kindly make a tax-free donation at www.liveandletlivefarm.org or send your check to Live and Let Live Farm, Inc., 20 Paradise Lane, Chichester, NH 03258.
- Volunteer to feed and care for the animals, increase awareness about the rescue; and raise funds to pay for critical items such as grain, hay, and medical needs. Volunteering starts by applying through the website.
- Ask your employer to match donations you make to LLLF Rescue.
- Donate hay or grain at Clark's Grain Store, at the Hooksett or Concord Agway, through the Chichester Tractor Supply, or directly to Live and Let Live Farm Rescue.
- Choose LLLF as your AmazonSmile charity.

Wish List

Can you donate any of the following items?

- Paper towels, baby wipes, latex gloves (all sizes), heavy-duty trash bags, bleach
- A new or used heavy-duty vehicle for towing a large horse trailer
- A large horse or stock trailer
- Metal round pen panels and gates
- Land, old farm or other property for future expansion and pasturing of sanctuary animals
- Tractor/any farm equipment
- Wheelbarrows, shovels, pitchforks
- Black oil sunflower seeds, apple cider vinegar, corn oil, grain store gift certificates
- Pickup truck: must run; doesn't need to be inspected; onsite rescue use only

An Easy Way to Donate



Live and Let Live Farm Rescue has a Quick Response (QR) code. Hold your phone's camera over the QR code, and it takes you directly to the donation page on the website.

Please consider donating to help animals.